

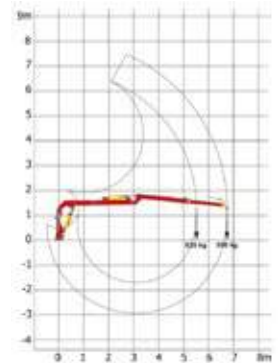


XYLOGRUE 8.00 on XYLOTRAIL

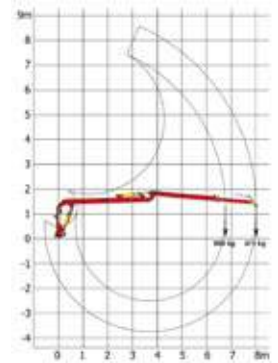


XYLOGRUE 8.00 - 3-point mounted

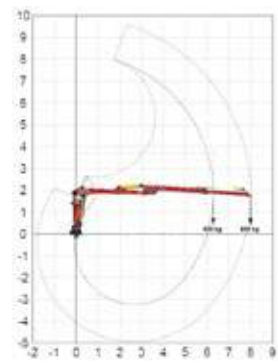
- 6.75 or 8-meter reach forestry cranes.
- Adaptable to 3-point tractor or forestry trailer.
- Stabilisation stands “flap down” type with non-return valves and extra-wide feet for better stability.
- Cylinder of the 2nd arm with parallelogram system for a better ergonomic in operation.
- 4 rotation cylinders for more flexibility.
- Hydraulic telescope for greater working comfort.
- Multi-command control valve.
- The hydraulic hoses are protected inside the beam.
- HLE steel grab for better strength.



Crane capacity XYLOGRUE 6.75



Crane capacity XYLOGRUE 8



Crane capacity XYLOGRUE 8 PRO

Technical characteristics

MODELS	XYLOGRUE 6.75	XYLOGRUE 8.00	XYLOGRUE 8.00 PRO
Maximum reach	6,75 m	8,00 m	
Lifting capacity	500 kg	475 kg	800 kg
Telescope length	1,25 m		1,80 m
Rotation angle	370°		
Crane rotation	With 4 cylinders		
Rotation torque	13 K.Nm	19 kNm	
Grip opening	1,27 m	1,50 m	
Grip area	0,18 m ²	0,23 m ²	
Stabilisation type	Hydraulic type «flap down»		
Control	Hydraulic multi-command valve		
Working pressure	200 bar		
Oil flow	20 - 60 L/min		40 - 60 l/min
Weight of the crane without stand / without control valve	835 kg	870 kg	1300 kg

Standard equipment

- Stabilisation stands with extra-large feet for a 3-point linkage or a trailer.
- Crane rotation with 4 cylinders.
- 1.25 m hydraulic telescopic head.
- Grapple with HLE steel rotator.
- Hydraulic hoses protected inside the beam.

				£	Reference
CRANE TO BE MOUNTED ON FORESTRY TRAILER					
	XYLOTRAIL 11	XYLOTRAIL 15	XYLOTRAIL 18		
XYLOGRUE 6.75 on forestry trailer	●	●		8,865	79007A
XYLOGRUE 8.00 on forestry trailer	●	●		11,110	79008A
XYLOGRUE 8.00 PRO on forestry trailer			●	15,540	79013A
CONTROL > OBLIGATORY TO DETERMINE					
Hydraulic multicontrol valve	●	●	●	850	79011A
Hydraulic control with levers and electric control with buttons for the telescope and grapple	●	●		2,210	79014A
Electro-hydraulic controls - by multifunctional levers	●	●	●	6,625	79009A
Electro-hydraulic controls – by remote control	●	●	●	8,980	79010A
OPTIONS					
Footbridge for user fitted on crane + control valves support	●	●		715	79006A
			●	715	79015A
Hydraulic unit 30 l/min. for PTO 350 rpm - 40 L tank Multiplier + piston pump (delivered with oil)*	●	●		2,035	70198A
Hydraulic unit 60 l/min. for PTO 350 rpm - 55 L tank Multiplier + piston pump (delivered with oil)*			●	2,340	70105B
Working lights	●	●	●	290	79005A
Balance brake	●	●	●	285	26A592

* Flange-mounted hydraulic pump on the PTO, no shaft required
The ● means compatibility of options with different models.

			£	Reference
-POINT MOUNTED CRANE or WINDING MACHINE				
	3-POINT LINKAGE TRACTOR	LOG SPLITTER F40 - F80		
XYLOGRUE 6.75 on other carriers	●	(1)	10,775	79003A
XYLOGRUE 8.00 on other carriers	●	●	13,135	79004A
XYLOGRUE 8.00 PRO on other carriers	●		18,280	79012A
CONTROL > OBLIGATORY TO DETERMINE				
Hydraulic multicontrol valve	●	●	850	79011A
Hydraulic control with levers and electric control with buttons for the telescope and grapple	●	●	2,210	79014A
Electro-hydraulic controls - by multifunctional levers	●	●	6,625	79009A
Electro-hydraulic controls – by remote control	●	●	8,980	79010A
OPTIONS				
Footbridge for user fitted on crane + control valves support		●	715	79006A
Hydraulic unit 30 l/min. for PTO 350 rpm - 40 L tank Multiplier + piston pump (delivered with oil)*	●		2,035	70195A
Working lights	●	●	290	79005A
Balance brake	●	●	285	26A592

(1) only for machine without conveyor

* Flange-mounted hydraulic pump on the PTO, no shaft required
The ● means compatibility of options with different models.



Multicontrol valve



Hydraulic control with levers and electric control with buttons for the telescope and grapple



Optional electro-hydraulic control by radio remote control



Optional electro-hydraulic controls with multifunctional levers