



XYLOTRAIL 15



XYLOTRAIL 15

- 15 or 18 T GVW.
- Hydraulic brake on the 4 wheels.
- In option, hydraulic assistance can be added to the wheels, to drive the trailer in the most difficult areas.
- Passageway of all hydraulic hoses, electrical wiring and parking brake, in the beam, for a better protection in difficult access areas.
- 10 mobile load bolsters.
- Protective grid in thick steel for a better loading and storing of the logs in the trailer safely.
- Recessed warning lights for optimum protection without the need to fold and unfold.
- Walkway for the user of the crane for high viewing the loading safely.
- +/- 32° articulated drawbar with 2 hydraulic cylinders.
- Drawbar with bolted ring.



Rabaud
advantages

Technical characteristics

MODELS	XYLOTRAIL 15	XYLOTRAIL 18
Body	Double beam	
Beam dimensions (L x W x H)	2 beam : 180 x 180 x 6 mm for each	
GVW	15 Tons	18 Tons
Load length	4,44 m (5.20 m with unfolded extension)	5,16 m
Number of load benches	10	
Ground clearance	340 mm	
Drawbar angling	+/- 32°	
Articulated drawbar	2 hydraulic cylinders	
Dimensions (L x W x H)	7,33 x 2,49 x 3,01 m	7,37 x 2,54 x 3,10 m
Weight (empty)	3 367 kg without crane 4 772 kg with 8 m crane	4 000 kg without crane 6 200 kg with 8 m PRO crane
Braking	4 hydraulic cylinders Ø 30 + parking brake	
Road speed	25 Km/h	
Tyres	500/60 - 22.5	
Tractor power	From 120 HP up to 180 HP	

NEW
Product



4 wheels hydraulically braked

Standard equipment

- Balance axles with hydraulic brake on the 4 wheels.
- Beam with embedded traffic lights.
- Protection grid.
- Drawbar with bolted ring.
- Hydraulically adjustable drawbar (+/- 32°).
- Protected hydraulic hoses.



XYLOTRAIL 18

	£	Reference
MODELS		
XYLOTRAIL 15 - Double beam, without wheels	15,835	78904A
XYLOTRAIL 18 - Double beam without wheels	18,930	78909A
WHEELS > OBLIGATORY TO DETERMINE		
• 4 wheels (500/60*22.5 16 PR A328 VP 8/0 221*275) - forestry applications - <i>ATTENTION : only model able to include hydraulic support</i>	3,310	78906A
• 4 wheels (500/60*22.5 profil T404 jante 8/0) - forestry applications	4,700	78907A
• 4 wheels (500/60 R 22.5 TWIN RADIAL jante 8/0) - mixed applications roads / fields	7,030	78908A
OPTIONS		
Wheels hydraulic assistance - <i>ATTENTION exclusively with wheels ref. 78906A</i>	6,970	78905A
Forestry crane XYLOGRUE (drive by tractor pump)	See pages 44-45	



Embedded traffic lights

Tyre fitting :



Tyre ref: 78906A

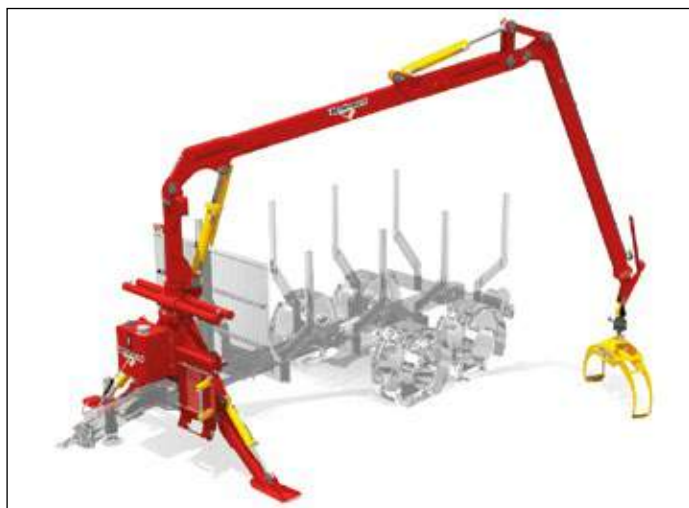


Tyre ref : 78907A



Tyre ref: 78908A





XYLOGRUE 8.00 on XYLOTRAIL

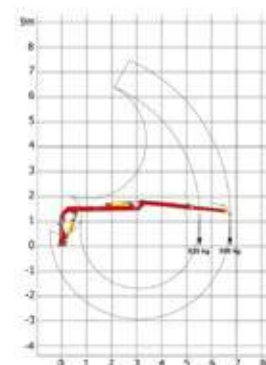


XYLOGRUE 8.00 - 3-point mounted

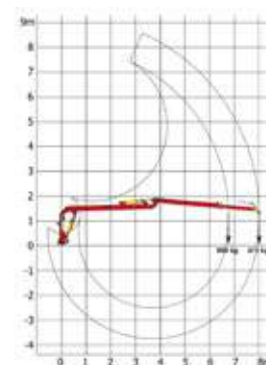
- 6.75 or 8-meter reach forestry cranes.
- Adaptable to 3-point tractor or forestry trailer.
- Stabilisation stands "flap down" type with non-return valves and extra-wide feet for better stability.
- Cylinder of the 2nd arm with parallelogram system for a better ergonomic in operation.
- 4 rotation cylinders for more flexibility.
- Hydraulic telescope for greater working comfort.
- Multi-command control valve.
- The hydraulic hoses are protected inside the beam.
- HLE steel grab for better strength.



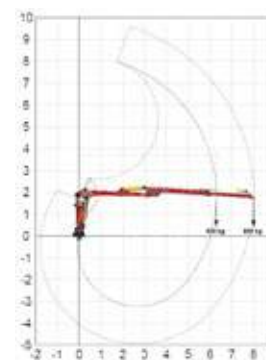
Rabaud
advantages



Crane capacity XYLOGRUE 6.75



Crane capacity XYLOGRUE 8



Crane capacity XYLOGRUE 8 PRO

Technical characteristics

MODELS	XYLOGRUE 6.75	XYLOGRUE 8.00	XYLOGRUE 8.00 PRO
Maximum reach	6,75 m	8,00 m	
Lifting capacity	500 kg	475 kg	800 kg
Telescope length	1,25 m		1,80 m
Rotation angle	370°		
Crane rotation	With 4 cylinders		
Rotation torque	13 K.Nm		19 kNm
Grip opening	1,27 m		1,50 m
Grip area	0,18 m ²		0,23 m ²
Stabilisation type	Hydraulic type «flap down»		
Control	Hydraulic multi-command valve		
Working pressure	200 bar		
Oil flow	20 - 60 L/min		40 - 60 l/min
Weight of the crane without stand / without control valve	835 kg	870 kg	1300 kg

Standard equipment

- Stabilisation stands with extra-large feet for a 3-point linkage or a trailer.
- Crane rotation with 4 cylinders.
- 1.25 m hydraulic telescopic head.
- Grapple with HLE steel rotator.
- Hydraulic hoses protected inside the beam.

				£	Reference
CRANE TO BE MOUNTED ON FORESTRY TRAILER					
	XYLOTRAIL 11	XYLOTRAIL 15	XYLOTRAIL 18		
XYLOGRUE 6.75 on forestry trailer	●	●		8,865	79007A
XYLOGRUE 8.00 on forestry trailer	●	●		11,110	79008A
XYLOGRUE 8.00 PRO on forestry trailer			●	15,540	79013A
CONTROL > OBLIGATORY TO DETERMINE					
Hydraulic multicontrol valve	●	●	●	850	79011A
Hydraulic control with levers and electric control with buttons for the telescope and grapple	●	●		2,210	79014A
Electro-hydraulic controls - by multifunctional levers	●	●	●	6,625	79009A
Electro-hydraulic controls – by remote control	●	●	●	8,980	79010A
OPTIONS					
Footbridge for user fitted on crane + control valves support	●	●		715	79006A
			●	715	79015A
Hydraulic unit 30 l/min. for PTO 350 rpm - 40 L tank Multiplier + piston pump (delivered with oil)*	●	●		2,035	70198A
Hydraulic unit 60 l/min. for PTO 350 rpm - 55 L tank Multiplier + piston pump (delivered with oil)*			●	2,340	70105B
Working lights	●	●	●	290	79005A
Balance brake	●	●	●	285	26A592

* Flange-mounted hydraulic pump on the PTO, no shaft required
The ● means compatibility of options with different models.

				£	Reference
-POINT MOUNTED CRANE or WINDING MACHINE					
	3-POINT LINKAGE TRACTOR	LOG SPLITTER F40 - F80			
XYLOGRUE 6.75 on other carriers	●	(1)		10,775	79003A
XYLOGRUE 8.00 on other carriers	●	●		13,135	79004A
XYLOGRUE 8.00 PRO on other carriers	●			18,280	79012A
CONTROL > OBLIGATORY TO DETERMINE					
Hydraulic multicontrol valve	●	●		850	79011A
Hydraulic control with levers and electric control with buttons for the telescope and grapple	●	●		2,210	79014A
Electro-hydraulic controls - by multifunctional levers	●	●		6,625	79009A
Electro-hydraulic controls – by remote control	●	●		8,980	79010A
OPTIONS					
Footbridge for user fitted on crane + control valves support		●		715	79006A
Hydraulic unit 30 l/min. for PTO 350 rpm - 40 L tank Multiplier + piston pump (delivered with oil)*	●			2,035	70195A
Working lights	●	●		290	79005A
Balance brake	●	●		285	26A592

(1) only for machine without conveyor

* Flange-mounted hydraulic pump on the PTO, no shaft required
The ● means compatibility of options with different models.



Multicontrol valve



Hydraulic control with levers and electric control with buttons for the telescope and grapple



Optional electro-hydraulic control by radio remote control



Optional electro-hydraulic controls with multifunctional levers