

DRIVE THE CHANGE



KB

One machine, a thousand solutions.







ISOLATOR BATTERY SWITCH
interruptor de la batería




SUPER SILENT ENGINE COVER WITH FAST LOCK
cubierta del motor




GREASE POINT
punto de engrase



HEAVY DUTY RUBBER TRACK




MIS
RELIABLE FEEDBACK SYSTEM FOR CONTINUOUS COMMUNICATION WITH THE MACHINE'S FUNCTIONS.




HSB
DESIGNED TO INCREASE THE SPEED AND MOVEMENT OF THE ARM.


AIESS
THE SYSTEM MANAGES THE THERMAL MOTOR FUNCTIONS, SETTING THE MOTOR TO IDLE AFTER EACH MANOEUVRE AND TURNING IT OFF WHEN IT IS NOT USED FOR MORE THAN 2 MINUTES. THE MOTOR RESTARTS AT THE TOUCH OF A BUTTON. THIS SYSTEM HELPS REDUCE FUEL CONSUMPTION AND ENVIRONMENTAL EMISSIONS.



TCS
THIS SYSTEM ENABLES STRAIGHT AND PRECISE CONTROL OF THE CRANE WHEN LOADING OR OFFLOADING ONTO TRANSPORT VEHICLES IN A SAFE FASHION.




DPS
TWO POSITION STABILIZER
SMALL AREA
2,5 MT X 2,5 MT
LARGE AREA
4 MT X 4 MT



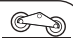
na

SSF
TO STABILIZE AND DESTABILIZE THE MACHINE FULLY AND AUTOMATICALLY.


IPsone
SYSTEM FOR MONITORING AND REMOTE MANAGEMENT OF THE MACHINE.




BRO
ROCKING ROLLERS




OAFR
HYDRAULIC OUTPUT 36 LT/MIN (8.17 GAL) TO POWER A RANGE OF HYDRAULIC TOOLS.




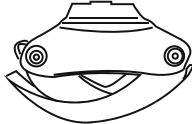
EMS
SYSTEM FOR THE AUTOMATIC CONTROL OF THE ENGINE.



TWIN SPEED
TRACTION SYSTEM WITH TWO SELECTABLE SPEEDS.




MSS
POWERFUL SYSTEM DESIGN TO CONTROL ALL FUNCTIONS OF THE MACHINE.

Log grapples

Capacity 250 kg / 551.16 lb



Demolitions shears

Capacity 250 kg / 551.16 lb





Display 3 inch



10 hours battery X2



35 functions

35



Wireless



battery level



belt



functions selectors



EMERGENCY



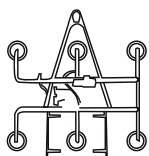
RPM Knob



2 speed

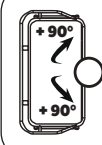


electric start

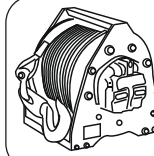


Glazing Vacuum

Capacity 400 kg / 882 lb



Basket Rotating



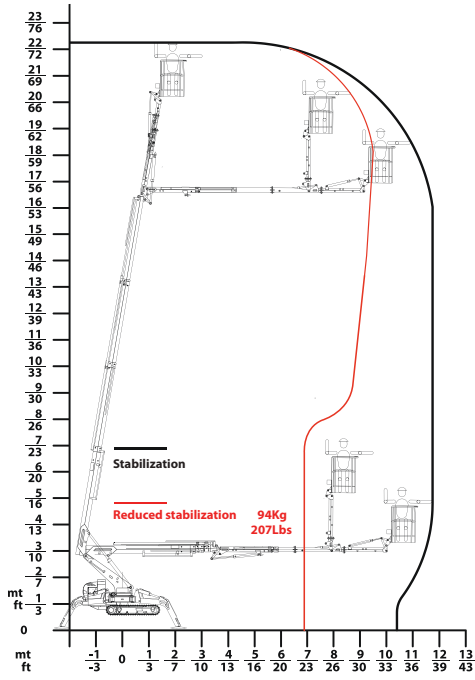
Winch Cabestrante

Cord length Capacity 30 m / 98.43 ft 400 kg / 882 lb

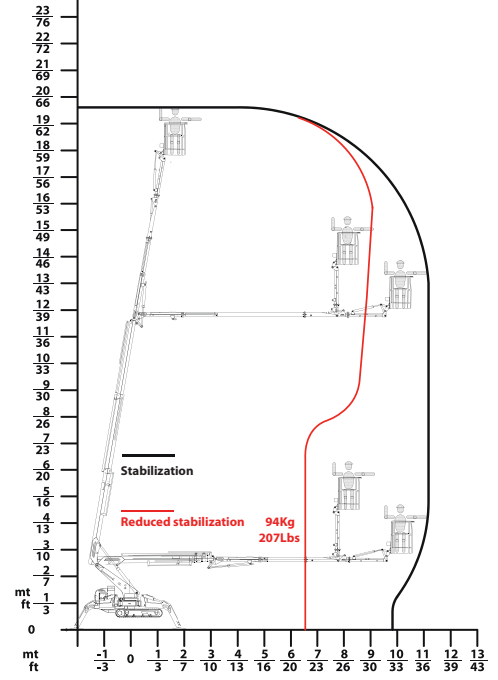


KB23**Basket**

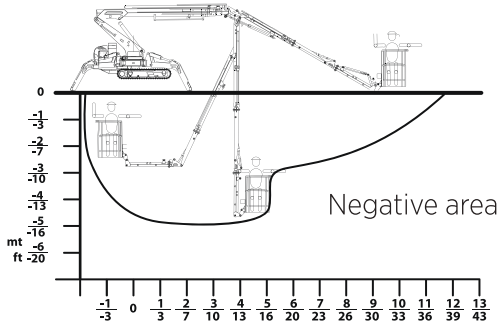
Maximum load

**250 kg
(551 lbs)****KB20****Basket**

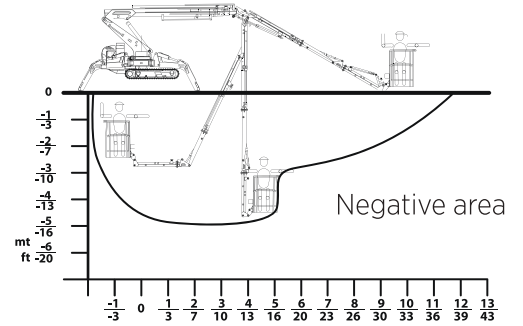
Maximum load

**250 kg
(551 lbs)****Underbridge**

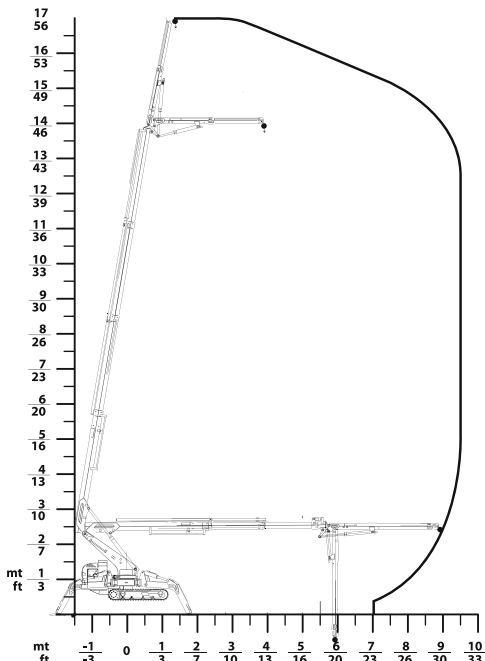
Max. Working height

**-5 m
(16.4 feet)****Underbridge**

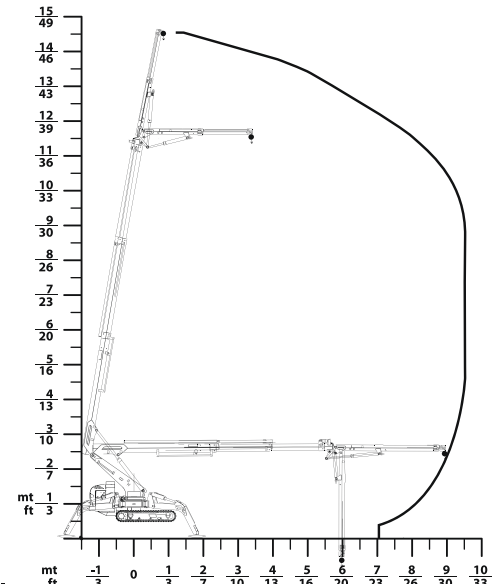
Max. Working height

**-5 m
(16.4 feet)****Crane**

Maximum load

**850 kg
(1874 lbs)****Crane**

Maximum load

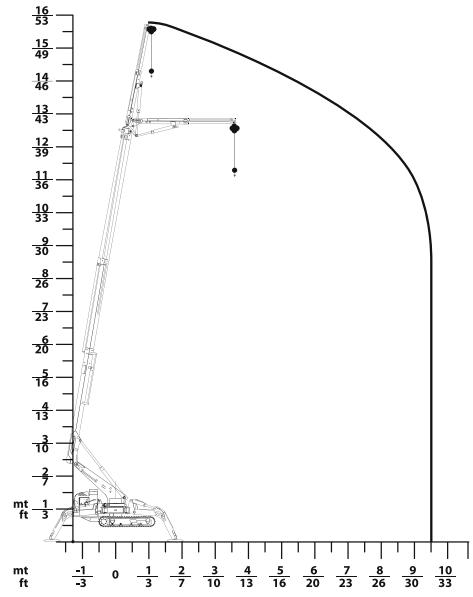
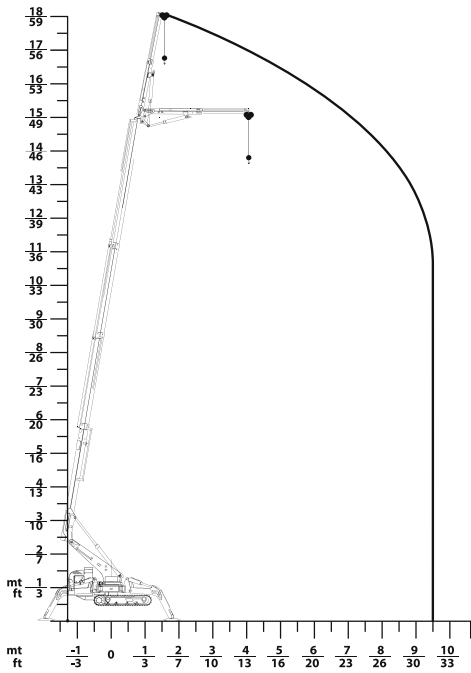
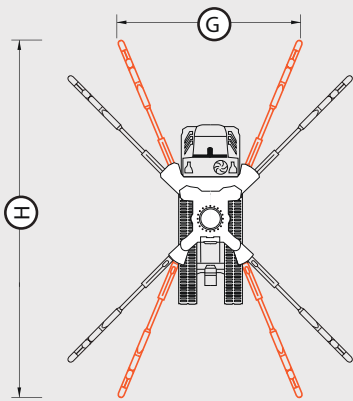
**850 kg
(1874 lbs)**

KB 23**Winch**

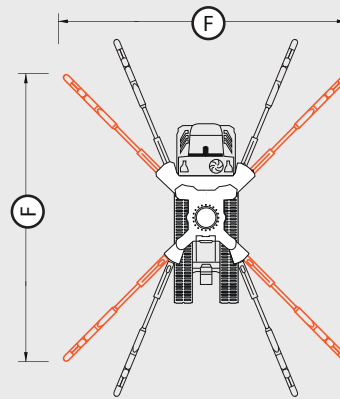
Maximum load

**400 kg
(882 lbs)****Winch**

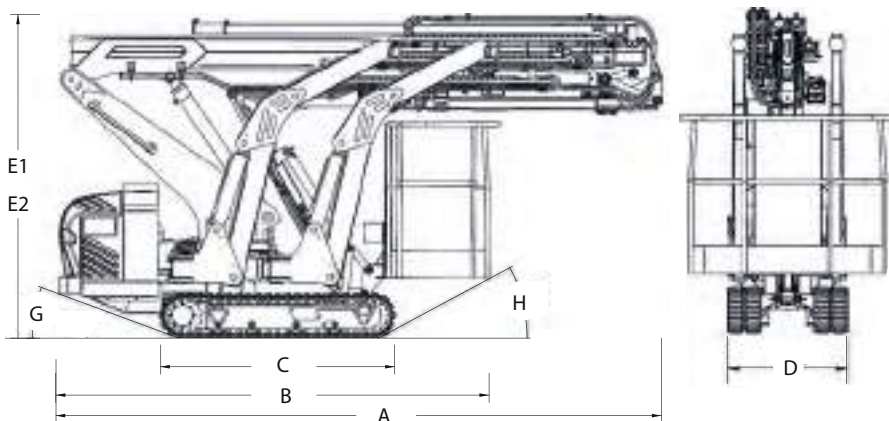
Maximum load

**400 kg
(882 lbs)****KB 20****KB 23** & **KB 20****Two position stabilizer****Small area**

	mm	in
Ⓒ	2530	100
Ⓓ	4970	196

Large area

	mm	in
Ⓕ	4000	158

Dimensions

DIMENSIONS				
	mm	in	KB 20	KB 23
Ⓐ	4470	176	●	●
Ⓑ	3260	128	●	●
Ⓒ	1765	70	●	●
Ⓓ	890	36	●	●
Ⓔ	2245	88	●	
Ⓕ	2395	94		●
Ⓖ	20°		●	●
Ⓗ	28°		●	●

SPECIFICATIONS		20	23
	METRIC U.S.		
ENGINE			
Internal combustion engine	Honda IGX 440 electronic control	●	●
Pump voltage	V 220/110	●	●
Frequency	Hz 50/60	●	●
Power	2.2 kw	●	●
TRANSMISSION			
Pumps	n. 3 gear pumps	●	●
HYDRAULIC SYSTEM			
Max pressure / Presión máxima	240 bar (3481 psi)	●	●
TRACTION			
Speed max. offset	0-2.6 Km/h (0-1.62 mph)	●	●
Stabilizers	electronic control / con control electrónico	●	●
Platform levelling	Hydraulic electronic control	●	●
Boom	Hydraulically extendable	●	●
Controls	Electronic control of prop. hydraulics	●	●
Oil tank capacity	35 lt (8 gal)	●	●
Maximum wind speed	12.5m/sec (28 mph)	●	●
Electric system voltage	12 V	●	●
Horizontal load max	50 daN	●	●
Manoeuvring Speed / Velocidad de maniobra	0.3 m/sec (0.7 mph)	●	●
Maxi. permis. tilt frame	1°	●	●
Gradeability max	20° In the directions of travel	●	●
PERFORMANCE		20	23
Max. Working height	19.4 m (63.7 feet) 22.30 m (73.2 feet)	●	●
Outreach with (80kg)	11.2 m (36.75 feet) 11.75 m (38.66 feet)	●	●
Development up platform height basket	17,40 m (57.1 feet) 20.30 m (66.60 feet)	●	●
Machine weight unladen	3210 kg (7077 lbs) 3384 kg (7460 lbs)	●	●
PERF. UNDERBRIDGE			
Max. Working height	-5 m (16.4 feet)	●	●
Machine weight unladen	3210 kg (7077 lbs) 3384 kg (7460 lbs)	●	●
PERFORMANCE			
Max. Working height	16 m (52.5 feet) 18.5 m (60.7 feet)	●	●
Maximum load	850 kg (1874 lbs)	●	●
Working radius	9.5 m (31.2 feet)	●	●
Machine weight unladen	2990 kg (6592 lbs) 3164 kg (6975 lbs)	●	●
PERFORMANCE WINCH			
Maximum load / Capacidad máxima	400 kg (882 lbs)	●	●