

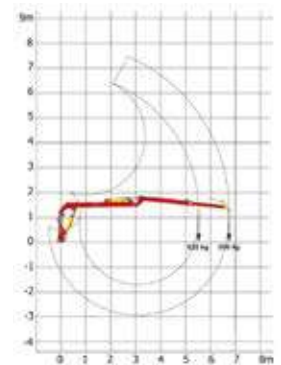


XYLOGRUE 8.00 on XYLOTRAIL



XYLOGRUE 8.00 - 3-point mounted

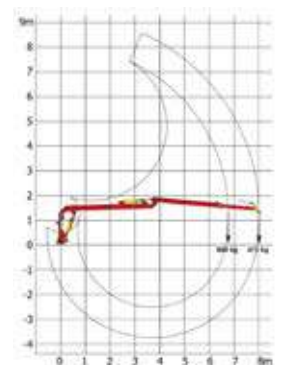
- 6.75 or 8-meter reach forestry cranes.
- Adaptable to 3-point tractor or forestry trailer.
- Stabilisation stands “flap down” type with non-return valves and extra-wide feet for better stability.
- Cylinder of the 2nd arm with parallelogram system for a better ergonomic in operation.
- 4 rotation cylinders for more flexibility.
- Hydraulic telescope for greater working comfort.
- Type of controls to be defined: reindeer horn, radio control, levers, etc.
- The hydraulic hoses are protected inside the beam.
- HLE steel grab for better strength.



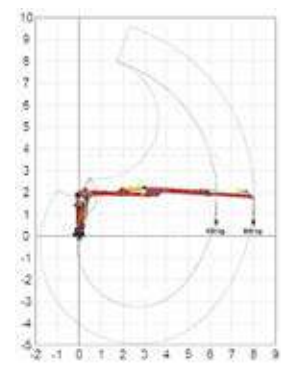
Crane capacity XYLOGRUE 6.75

### Technical characteristics

MODELS	XYLOGRUE 6.75	XYLOGRUE 8.00	XYLOGRUE 8.00 PRO
<b>Maximum reach</b>	6,75 m	8,00 m	
<b>Lifting capacity</b>	500 kg	475 kg	800 kg
<b>Telescope length</b>	1,25 m		1,80 m
<b>Rotation angle</b>	370°		
<b>Crane rotation</b>	With 4 cylinders		
<b>Rotation torque</b>	13 K.Nm		19 kNm
<b>Grip opening</b>	1,27 m		1,50 m
<b>Grip area</b>	0,18 m <sup>2</sup>		0,23 m <sup>2</sup>
<b>Stabilisation type</b>	Hydraulic type «flap down»		
<b>Control</b>	To be defined: reindeer horn type, or radio control, or levers...		
<b>Working pressure</b>	200 bar		
<b>Oil flow</b>	20 - 60 L/min		40 - 80 l/min
<b>Weight of the crane without stand / without control valve</b>	835 kg	870 kg	1300 kg



Crane capacity XYLOGRUE 8



Crane capacity XYLOGRUE 8 PRO

### Standard equipment

- Stabilisation stands with extra-large feet for a 3-point linkage or a trailer.
- Crane rotation with 4 cylinders.
- 1.25 m or 1,80 m hydraulic telescopic head.
- Grapple with HLE steel rotator.
- Hydraulic hoses protected inside the beam.

					Price	Reference
<b>CRANE TO BE MOUNTED ON FORESTRY TRAILER</b>						
		<b>XYLOTRAIL 11</b>	<b>XYLOTRAIL 15</b>	<b>XYLOTRAIL 18</b>		
<b>XYLOGRUE 6.75</b> on forestry trailer					9200.00	79007A
<b>XYLOGRUE 8.00</b> on forestry trailer					11535.00	79008A
<b>XYLOGRUE 8.00 PRO</b> on forestry trailer					16135.00	79013A
<b>CONTROL &gt; OBLIGATORY TO DETERMINE</b>						
<b>1</b>	Hydraulic multicontrol valve <i>with operator bridge</i>				1690.00	79011A
<b>2</b>	Hydraulic control with levers and electric control with buttons for the telescope and grapple <i>with operator bridge</i>				3155.00	79014A
	Electro-hydraulic control + hydraulic power unit compulsory, to be added	by multifunctional levers <b>3</b>			7165.00	79009A
		by radio control <b>4</b>			9705.00	79010A
<b>OPTIONS</b>						
Hydraulic unit 30 l/min. for PTO 350 rpm - 40 L tank Multiplier + piston pump ( <i>delivered with oil</i> )*					2200.00	70198A
Hydraulic unit 60 l/min. for PTO 350 rpm - 55 L tank Multiplier + piston pump ( <i>delivered with oil</i> )*					2525.00	70105B
Working lights					310.00	79005A
Balance brake					310.00	26A592
<b>-POINT MOUNTED CRANE or LOG SPLITTER</b>						
					<b>3-POINT LINKAGE TRACTOR</b>	<b>LOG SPLITTER F80</b>
<b>XYLOGRUE 6.75</b> on other carriers						
						(1)
<b>XYLOGRUE 8.00</b> on other carriers					12525.00	79003A
					14970.00	79004A
<b>XYLOGRUE 8.00 PRO</b> on other carriers					14970.00	79017A
					19905.00	79012A
<b>CONTROL &gt; OBLIGATORY TO DETERMINE</b>						
<b>1</b>	Hydraulic multicontrol valve				920.00	79018A
	Hydraulic multicontrol valve <i>with operator bridge</i>				1690.00	79011A
	Hydraulic control with levers and electric control with buttons for the telescope and grapple				2390.00	79025A
<b>2</b>	Hydraulic control with levers and electric control with buttons for the telescope and grapple <i>with operator bridge</i>				3155.00	79014A
	Electro-hydraulic control + hydraulic power unit compulsory, to be added	by multifunctional levers <b>3</b>			7165.00	79020A
		by radio control <b>4</b>			9705.00	79019A
<b>OPTIONS</b>						
Hydraulic unit 30 l/min. for PTO 350 rpm - 40 L tank Multiplier + piston pump ( <i>delivered with oil</i> )*					2200.00	70110B
Working lights					310.00	79005A
Balance brake					310.00	26A592

(1) only for machine without conveyer

\* Flange-mounted hydraulic pump on the PTO, no shaft required  
 The ● means compatibility of options with different models.



**1** Hydraulic multicontrol valve



**2** Hydraulic control with levers and electric control with buttons for the telescope and grapple



**3** Electro-hydraulic controls by multifunctional levers



**4** Electro-hydraulic controls by remote control