



XYLOTRAIL 11



XYLOTRAIL 11

- 11 T GVW.
- Hydraulic brake on the 4 wheels.
- Passageway of all hydraulic hoses, electrical wiring and parking brake, in the beam, for a better protection in difficult access areas.
- 8 mobile load bolsters.
- Protective grid in thick steel for a better loading and storing of the logs in the trailer safely.
- Recessed warning lights for optimum protection without the need to fold and unfold.
- Walkway for the user of the crane for high viewing the loading safely.
- +/- 32° articulated drawbar with 2 hydraulic cylinders.
- Drawbar with bolted ring.



Rabaud  
advantages

## Technical characteristics

MODEL	XYLOTRAIL 11
<i>Body</i>	Single beam
<i>Beam dimensions (L x W x H)</i>	180 x 180 x 6 mm
<i>GVW</i>	11 Tons
<i>Load length</i>	3,93 m
<i>Number of load benches</i>	8
<i>Ground clearance</i>	517 mm
<i>Drawbar angling</i>	+/- 32°
<i>Articulated drawbar</i>	2 hydraulic cylinders
<i>Dimensions (L x W x H)</i>	5,92 x 2,28 x 2,94 m
<i>Weight (empty)</i>	1 905 kg without crane 3 268 kg with 8 m crane
<i>Braking</i>	4 hydraulic cylinders Ø 25 + parking brake
<i>Road speed</i>	25 km/h
<i>Tyres</i>	400/60 - 15.5 6 TR TL
<i>Tractor power</i>	from 80 HP up to 140 HP



4 wheels hydraulically braked

### Standard equipment

- Balance axles with hydraulic brake on the 4 wheels.
- Beam with embedded traffic lights.
- Protective grid.
- Drawbar with bolted ring.
- Hydraulically adjustable drawbar (+/- 32°).
- Protected hydraulic hoses.



XYLOTRAIL 11 - without forestry crane

	Price	Reference
<b>MODEL</b>		
<b>XYLOTRAIL 11</b> - Single beam frame, with wheels	<b>16250.00</b>	78901A
<b>OPTIONS</b>		
20 cm grid stop for bundles loading	<b>700.00</b>	78903A
Supplementary kit of 2 bolsters to bolt	<b>1350.00</b>	78902A
Forestry crane XYLOGRUE (drive by tractor pump)	See pages 46-47	





XYLOTRAIL 15



XYLOTRAIL 15

- 15 or 18 T GVW.
- Hydraulic brake on the 4 wheels.
- In option, hydraulic assistance can be added to the wheels, to drive the trailer in the most difficult areas.
- Passageway of all hydraulic hoses, electrical wiring and parking brake, in the beam, for a better protection in difficult access areas.
- 10 mobile load bolsters.
- Protective grid in thick steel for a better loading and storing of the logs in the trailer safely.
- Recessed warning lights for optimum protection without the need to fold and unfold.
- Walkway for the user of the crane for high viewing the loading safely.
- +/- 32° articulated drawbar with 2 hydraulic cylinders.
- Drawbar with bolted ring.



### Technical characteristics

MODELS	XYLOTRAIL 15	XYLOTRAIL 18
<b>Body</b>	Double beam	
<b>Beam dimensions (L x W x H)</b>	2 beam : 180 x 180 x 6 mm for each	
<b>GVW</b>	15 Tons	18 Tons
<b>Load length</b>	4,44 m (5.20 m with unfolded extension)	5,16 m
<b>Number of load benches</b>	10	
<b>Ground clearance</b>	340 mm	
<b>Drawbar angling</b>	+/- 32°	
<b>Articulated drawbar</b>	2 hydraulic cylinders	
<b>Dimensions (L x W x H)</b>	7,33 x 2,49 x 3,01 m	7,37 x 2,54 x 3,10 m
<b>Weight (empty)</b>	3 367 kg without crane 4 772 kg with 8 m crane	4 000 kg without crane 6 060 kg with 8 m PRO crane
<b>Braking</b>	4 hydraulic cylinders Ø 30 + parking brake	
<b>Road speed</b>	25 km/h	
<b>Tyres</b>	500/60 - 22.5	
<b>Tractor power</b>	From 120 HP up to 180 HP	



4 wheels hydraulically braked

### Standard equipment

- Balance axles with hydraulic brake on the 4 wheels.
- Beam with embedded traffic lights.
- Protection grid.
- Drawbar with bolted ring.
- Hydraulically adjustable drawbar (+/- 32°).
- Protected hydraulic hoses.



XYLOTRAIL 18

	Price	Reference
<b>MODELS</b>		
<b>XYLOTRAIL 15</b> - Double beam without wheels	<b>18435.00</b>	78904A
<b>XYLOTRAIL 18</b> - Double beam without wheels	<b>21655.00</b>	78909A
<b>WHEELS &gt; OBLIGATORY TO DETERMINE</b>		
• 4 wheels (500/60*22.5 16 PR A328 VP 8/0 221*275) - forestry applications - <i>ATTENTION : only model able to include hydraulic support</i>	<b>3190.00</b>	78906A
• 4 wheels (500/60*22.5 profil T404 jante 8/0) - forestry applications	<b>4535.00</b>	78907A
• 4 wheels (500/60 R 22.5 TWIN RADIAL jante 8/0) - mixed applications roads / fields	<b>6780.00</b>	78908A
<b>OPTIONS</b>		
Wheels hydraulic assistance - <i>ATTENTION exclusively with wheels ref. 78906A</i>	<b>6720.00</b>	78905A
Forestry crane XYLOGRUE (drive by tractor pump)	See pages 46-47	



Embedded traffic lights

### Tyre fitting :



Tyre ref: 78906A



Tyre ref: 78907A



Tyre ref: 78908A



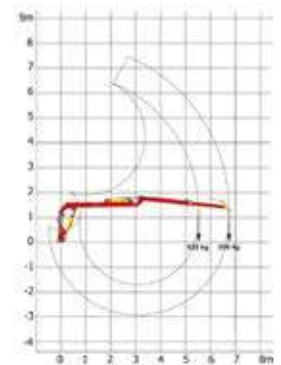


XYLOGRUE 8.00 on XYLOTRAIL



XYLOGRUE 8.00 - 3-point mounted

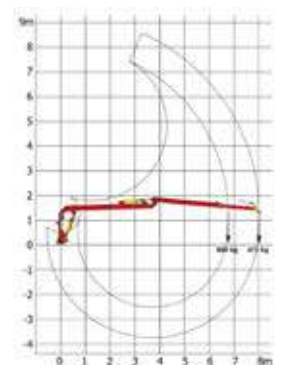
- 6.75 or 8-meter reach forestry cranes.
- Adaptable to 3-point tractor or forestry trailer.
- Stabilisation stands “flap down” type with non-return valves and extra-wide feet for better stability.
- Cylinder of the 2nd arm with parallelogram system for a better ergonomic in operation.
- 4 rotation cylinders for more flexibility.
- Hydraulic telescope for greater working comfort.
- Type of controls to be defined: reindeer horn, radio control, levers, etc.
- The hydraulic hoses are protected inside the beam.
- HLE steel grab for better strength.



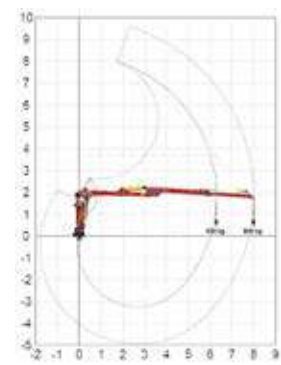
Crane capacity XYLOGRUE 6.75

### Technical characteristics

MODELS	XYLOGRUE 6.75	XYLOGRUE 8.00	XYLOGRUE 8.00 PRO
<b>Maximum reach</b>	6,75 m	8,00 m	
<b>Lifting capacity</b>	500 kg	475 kg	800 kg
<b>Telescope length</b>	1,25 m		1,80 m
<b>Rotation angle</b>	370°		
<b>Crane rotation</b>	With 4 cylinders		
<b>Rotation torque</b>	13 K.Nm		19 kNm
<b>Grip opening</b>	1,27 m		1,50 m
<b>Grip area</b>	0,18 m <sup>2</sup>		0,23 m <sup>2</sup>
<b>Stabilisation type</b>	Hydraulic type «flap down»		
<b>Control</b>	To be defined: reindeer horn type, or radio control, or levers...		
<b>Working pressure</b>	200 bar		
<b>Oil flow</b>	20 - 60 L/min		40 - 80 l/min
<b>Weight of the crane without stand / without control valve</b>	835 kg	870 kg	1300 kg



Crane capacity XYLOGRUE 8



Crane capacity XYLOGRUE 8 PRO

### Standard equipment

- Stabilisation stands with extra-large feet for a 3-point linkage or a trailer.
- Crane rotation with 4 cylinders.
- 1.25 m or 1,80 m hydraulic telescopic head.
- Grapple with HLE steel rotator.
- Hydraulic hoses protected inside the beam.

				Price	Reference
<b>CRANE TO BE MOUNTED ON FORESTRY TRAILER</b>					
	<b>XYLOTRAIL 11</b>	<b>XYLOTRAIL 15</b>	<b>XYLOTRAIL 18</b>		
<b>XYLOGRUE 6.75</b> on forestry trailer				9200.00	79007A
<b>XYLOGRUE 8.00</b> on forestry trailer				11535.00	79008A
<b>XYLOGRUE 8.00 PRO</b> on forestry trailer				16135.00	79013A
<b>CONTROL &gt; OBLIGATORY TO DETERMINE</b>					
<b>1</b>	Hydraulic multicontrol valve <i>with operator bridge</i>			1690.00	79011A
<b>2</b>	Hydraulic control with levers and electric control with buttons for the telescope and grapple <i>with operator bridge</i>			3155.00	79014A
	Electro-hydraulic control + <b>hydraulic power unit compulsory, to be added</b>	by multifunctional levers <b>3</b>		7165.00	79009A
		by radio control <b>4</b>		9705.00	79010A
<b>OPTIONS</b>					
Hydraulic unit 30 l/min. for PTO 350 rpm - 40 L tank Multiplier + piston pump ( <i>delivered with oil</i> )*				2200.00	70198A
Hydraulic unit 60 l/min. for PTO 350 rpm - 55 L tank Multiplier + piston pump ( <i>delivered with oil</i> )*				2525.00	70105B
Working lights				310.00	79005A
Balance brake				310.00	26A592
<b>-POINT MOUNTED CRANE or LOG SPLITTER</b>		<b>3-POINT LINKAGE TRACTOR</b>	<b>LOG SPLITTER F80</b>		
<b>XYLOGRUE 6.75</b> on other carriers		●		12525.00	79003A
			(1)	11190.00	79016A
<b>XYLOGRUE 8.00</b> on other carriers		●		14970.00	79004A
			●	14970.00	79017A
<b>XYLOGRUE 8.00 PRO</b> on other carriers		●		19905.00	79012A
<b>CONTROL &gt; OBLIGATORY TO DETERMINE</b>					
<b>1</b>	Hydraulic multicontrol valve			920.00	79018A
	Hydraulic multicontrol valve <i>with operator bridge</i>			1690.00	79011A
	Hydraulic control with levers and electric control with buttons for the telescope and grapple			2390.00	79025A
<b>2</b>	Hydraulic control with levers and electric control with buttons for the telescope and grapple <i>with operator bridge</i>			3155.00	79014A
	Electro-hydraulic control + <b>hydraulic power unit compulsory, to be added</b>	by multifunctional levers <b>3</b>		7165.00	79020A
		by radio control <b>4</b>		9705.00	79019A
<b>OPTIONS</b>					
Hydraulic unit 30 l/min. for PTO 350 rpm - 40 L tank Multiplier + piston pump ( <i>delivered with oil</i> )*				2200.00	70110B
Working lights				310.00	79005A
Balance brake				310.00	26A592

(1) only for machine without conveyer

\* Flange-mounted hydraulic pump on the PTO, no shaft required  
The ● means compatibility of options with different models.



**1** Hydraulic multicontrol valve



**2** Hydraulic control with levers and electric control with buttons for the telescope and grapple



**3** Electro-hydraulic controls by multifunctional levers



**4** Electro-hydraulic controls by remote control